

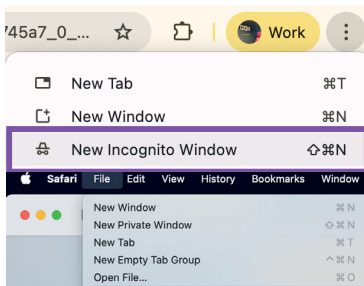
How to enrol staff personal device and student BYOD to Secure Access Wi-Fi

Step 1

If you don't have an internet connection on your device, connect it to the **N4L Enrol** network with passphrase:

Step 2

Open a browser in **incognito** or **private mode**.

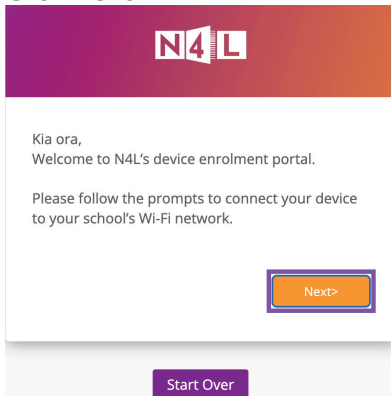


Note: For students using Google Chrome or Chromebooks, incognito may not be available. If so, ensure you are signed in using your school account.

Step 3

Go to

Click **Next**



Step 4

Sign in with your school's Microsoft account

Sign in

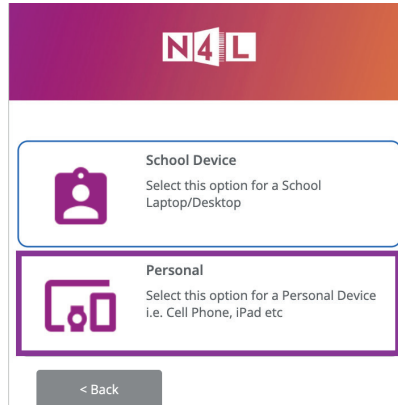
user@microsoft.school.co.nz

Next

Step 5

Note: This step applies only for school staff. Students should proceed straight to Step 6.

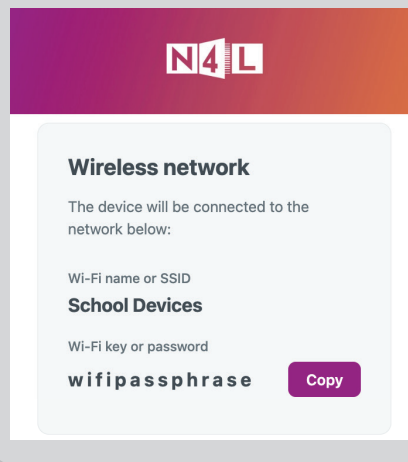
Click on **Personal**



Step 6a

Android, Chromebook and Mac devices only

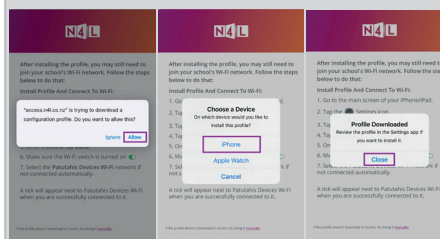
Click on **Copy** and paste the key to network on your device.



Step 6b.1

iPad and iPhone devices only

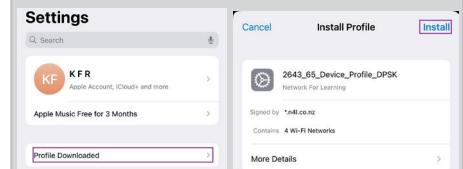
Follow the pop-up window and choose the right device.



Step 6b.2

iPad and iPhone devices only

Open the **Settings** app of the device and follow below.

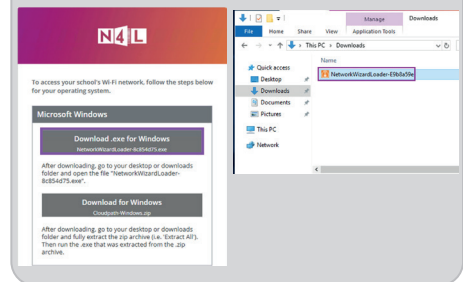


Device will automatically connect to

Step 6c.1

Windows devices only

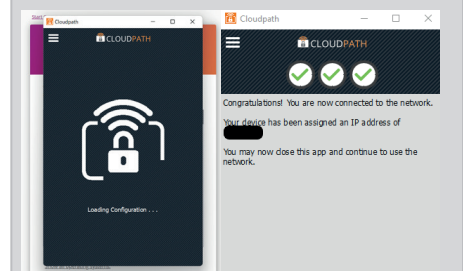
Follow the step, download and open the Cloudpath application.



Step 6c.2

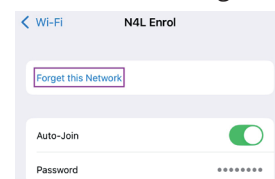
Windows devices only

Cloudpath application will automatically connect device to



Step 7

If the device was connected to **N4L Enrol** in Step 1, **forget N4L Enrol** from the device's Wi-Fi network settings.



Important: Depending on your device, you need to turn off **MAC randomisation** (also called **Private Wi-Fi Address**) after connecting to the network. If you're not sure how to do this, please contact your IT support team for assistance.

